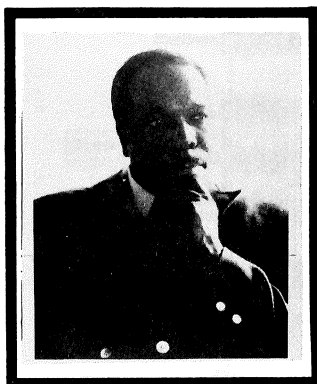


RHODA MAP

FULL SCORE

MEDIUM SWING - GRADE 5 - PLAYING TIME 4:00-5:00

COMPOSED AND ARRANGED BY THAD JONES



FOR THE THAD JONES SERIES

"Today's Jazz Sounds"

ONLY

• INSTRUMENTATION •

- | | |
|----------------------------------|---------------------|
| Full Score | 1st Trombone |
| 1st Bb Soprano Sax | 2nd Trombone |
| 1st Eb Alto Sax (opt. sub. part) | 3rd Trombone |
| 2nd Eb Alto Sax | 4th (Bass) Trombone |
| 1st Bb Tenor Sax | Drums |
| 2nd Bb Tenor Sax | Piano |
| Eb Baritone Sax | Bass |
| 1st Bb Trumpet | |
| 2nd Bb Trumpet | |
| 3rd Bb Trumpet | |
| 4th Bb Trumpet | |

*printed back-to-back

KendorMusic.com

BY ACCORD MUSIC, INC.

Extra Score and Parts Available

Sole Selling Agent:

KENDOR MUSIC, INC. DELEVAN, NEW YORK 14042

Thad Jones



When Thad Jones and Mel Lewis formed their jazz orchestra in 1965, no one really expected it to last. Critics claimed that all the big-name sidemen from that original band would flock back to the security of their studio work rather than fight the hassles of life in a 1960's big band.

Well, more than a decade after its debut at New York's Village Vanguard, the Thad Jones-Mel Lewis Jazz Orchestra is riding on the crest of a wave of popularity and critical acclaim that is virtually unheard of on the big band scene. The names are still there as sidemen, but what really makes this band rise above all the rest is Thad's charts. His magical writing is a beautiful combination of contemporary jazz sounds and popular, straightforward styles. A "virtuoso of surprise," one cannot anticipate the directions a Thad Jones chart will take. He writes unexpected, interesting counterlines and inventive sounds for each part, with a variety, individuality and excitement reminiscent of Ellington. His shout chorus is a phenomenon of dissonance, drive and lift which is totally unique in today's jazz band writing.

How does this fit into the educational situation? Some prominent jazz educators have commented:

Thad's charts are excellent playing models, thoroughly challenging and creative. The music is fresh in harmonic structure and presents new contexts for soloing.

More mature bands are challenged by the technical demands, and are inspired by the musical direction of Thad's music.

Young players turn on to the subtleties, the voicings and the harmonic movement while listening to the records makes them aware of articulation styles, so important in jazz.

The Thad Jones/Mel Lewis Orchestra presents a unique, fresh approach to the contemporary professional big band sound.

Thad's writing is pure jazz, free from the effects that so often clutter and impede many jazz arrangements. One of the truly great jazz writers, Thad Jones has achieved a sound all his own.

Rhoda Map

NOTICE: The law provides penalties for any unauthorized copying or reproduction of any copyrighted musical work.

composed & arranged
by Thad Jones

MEDIUM SWING $\text{♩} = 128$

(SUBSTITUTE PART PROVIDED FOR ALTO)

1st Sop
2nd Alto
1st Tenor
2nd Tenor
Baritone

Saxes

1st
2nd
3rd
4th

Trpts

1st
2nd
3rd
4th

Trbs

Bass

Drums

Guitar

Piano

A

SOLI

1st Sop
2nd Alto
1st Tenor
2nd Tenor
Baritone

Saxes

1st
2nd
3rd
4th

Trpts

1st
2nd
3rd
4th

Trbs

(COL CHORDS THRU-OUT)

Bass

Drums

Guitar

Piano

Saxes

1st Sop
2nd Alto
1st Tenor
2nd Tenor
Baritone

Trpts

1st
2nd
3rd
4th

Trbs

1st
2nd
3rd
4th

Bass

Drums

Guitar

Piano

F C9 F Fmi9 bb7 A 7(b9) D 7(b9) G 7(b9) C 6 Ami7 Dmi7 G 7(b9) C7 B7

B *f*

PLAY ON D.S. ONLY

Saxes

1st Sop
2nd Alto
1st Tenor
2nd Tenor
Baritone

Trpts

1st
2nd
3rd
4th

Trbs

1st
2nd
3rd
4th

Bass

Drums

Guitar

Piano

Bb 6 F1(b9) E1(b9) Ami9 D7(b9) Gmi9 C7(b9) FMA9 Eb2/F

C

(PLAY BOTH X'S)



Saxes

1st Sop
2nd Alto
1st Tenor
2nd Tenor
Baritone

Trpts

1st
2nd
3rd
4th

PLAY ON D.S. ONLY
COL. TRPT. I

Trbs

1st
2nd
3rd
4th

COL. TRB. I

Bass
Drums
Guitar
Piano

(ON D.S. ONLY)

F C9 F Fmi9 Bb7 A7(b9) D7(#9) G7(b9) C#9 Ami9 Dmi7 G7(b9) C#9 Gmi7 C7(b9) F#9

D

OPEN FOR SOLOS

Saxes

1st Sop
2nd Alto
1st Tenor
2nd Tenor
Baritone

G#9 Gmi9 C7 B7(b9) E7(#9) A7(b9) D#9 Bmi7 Emi7 A7(b9) D#9 Ami7 D7(b9) G#9 Gmi9 C7(b9) B7(b9) E7(#9)

Trpts

1st
2nd
3rd
4th

G#9 Gmi9 C7 B7(b9) E7(#9) A7(b9) D#9 Bmi7 Emi7 A7(b9) D#9 Ami7 D7(b9) G#9 Gmi9 C7(b9) B7(b9) E7(#9)

COL. TRPT. I

Trbs

1st
2nd
3rd
4th

F#9 Fmi9 Bb7 A7(b9) D7(#9) G7(b9) C#9 Ami7 Dmi7 G7(b9) C#9 Gmi7 C7(b9) F#9 Fmi9 Bb7(b9) A7(b9) D7(#9)

COL. TRB. I

Bass
Drums
Guitar
Piano

(COL. CHANGES)

F#9 Fmi9 Bb7 A7(b9) D7(#9) G7(b9) C#9 Ami7 Dmi7 G7(b9) C#9 Gmi7 C7(b9) F#9 Fmi9 Bb7(b9) A7(b9) D7(#9)

E

Saxes

1st Sop
2nd Alto
1st Tenor
2nd Tenor
Baritone

Trpts

1st
2nd
3rd
4th

Trbs

1st
2nd
3rd
4th

Bass

Drums

Guitar

Piano

Handwritten musical notation for section E, including notes, rests, and chord symbols such as A7(b9), Gmi7, D/F#, Bmi9, Emi7, A7(b9), D7, C#7, C9, G7(b9), F#7(b9), Bmi7, G7(b9), Fmi7, C/E, Ami9, Dmi7, G7(b9), C7, B7, Bb9, F7(b9), E7(b9), and Ami7.

F

Saxes

1st Sop
2nd Alto
1st Tenor
2nd Tenor
Baritone

Trpts

1st
2nd
3rd
4th

Trbs

1st
2nd
3rd
4th

Bass

Drums

Guitar

Piano

Handwritten musical notation for section F, including notes, rests, and chord symbols such as E7(b9), Ami7, D7(b9), G9, Gmi9, C7, B7(b9), E7(b9), D7(b9), Gmi7, C7(b9), F9, Eb7/F, F9, Fmi9, Bb7, A7(b9), D7(b9), D7(b9), Gmi7, C7(b9), F9, Eb7/F, F9, Fmi9, Bb7, A7(b9), and D7(b9).

G ON CUE

(LAST X ONLY)

Saxes

1st Sop
2nd Alto
1st Tenor
2nd Tenor
Baritone

Trpts

1st
2nd
3rd
4th

Trbns

1st
2nd
3rd
4th

Bass

Drums

Guitar

Piano

Chords: A7(#9), D9, Bmi9, Emi7, A7(b9), G7(b9), C9, Ami9, Dmi7, G7(b9), C9, Ami7, Gmi7, C7(b9), F, F9, F9, F, Fmi7, Bb7(b9), A7(b9)

H

Saxes

1st Sop
2nd Alto
1st Tenor
2nd Tenor
Baritone

Trpts

1st
2nd
3rd
4th

Trbns

1st
2nd
3rd
4th

Bass

Drums

Guitar

Piano

Chords: D7(#9), G7(b9), C9, Ami9, Dmi7, G7(b9), C9, Gmi9, C7(b9), F9, E9, F9

(OPT. TACET TO H)

SOLI

Saxes

Trpts

Trbs

1st Sop

2nd Alto

1st Tenor

2nd Tenor

Baritone

1st

2nd

3rd

4th

1st

2nd

3rd

4th

Bass

Drums

Guitar

Piano

Fm7 Bb7(#9) Bb7(b9) A7(b9) Ab7(b9)/A7(b9) D7(b9)(b9) G7(b9) G7(b9) Cb9 Am9 Dmi9 Ab13 G13

D. F. AL

CODA

FINE

Saxes

Trpts

Trbs

1st Sop

2nd Alto

1st Tenor

2nd Tenor

Baritone

1st

2nd

3rd

4th

1st

2nd

3rd

4th

Bass

Drums

Guitar

Piano

C7 Cb7

Fb9 Bmi9 E7(b9) A9 Em9 B7(b9) Em9 A7(b9) Dmi9 G7(b9) Cmi9